



## DL 20-200/T plus-EN54

- quick mounting
- excellent sound
- BS 5839



EN 54-24:2008  
**Ref. Nr.:** 010-14  
**ID-Code:** SAA-LS01  
1438-CPR-0233

ic audio GmbH, Boehringerstraße 14a,  
D-68307 Mannheim, Germany

CE-Symbol gemäß Richtlinie 93/68EWG

The 20W powered speaker is equipped with a 200mm 2-way system with a neodymium tweeter and a 100V transformer with 4 power adjustments. The powder-coated metal version with perforated grid cover in RAL 9010 guarantees lasting stability. A 2-pin ceramic block and a thermal fuse are provided for additional reliability, and the speaker chassis is impregnated against wetness.

The loudspeaker is also protected against the risks of environmental influences with protection class IP 21C. Quick and easy mounting with spring clamps and short tension distance. The connecting cables can be guided through rubber grommets into the fire dome.

The speaker is also compliant with the British Standard BS 5839, Part 8. Perfectly suitable for installations where high sound quality is needed. Special paint of the speaker in 4-digit RAL- or NCS- colour is available at extra cost. The fire dome is included in the delivery.

This speaker is suitable for a ceiling strength of about 8-45 mm. Our specification is primarily related to solid ceilings, for ceilings with soft materials higher ceiling thicknesses could be necessary. In addition, stronger cables and other fittings may also result in changes in the appropriate setup. Regarding the variety of materials and manufacturers, we recommend building a sample of the speaker to match the requirements accurately.

## Technical Data (Electrical)

Description	DL 20-200/T plus-EN54
Power	20/15/10/5 W
Impedance (100V)	500/667/1000/2000 ohm
Frequency Range	223 - 21.100 Hz
Frequency Response	40 - 22.500 Hz
SPL IEC268-5, 1W/1m	88,0 dB
SPL EN54-24, Pmax/4m	89,0 dB
Sensitivity EN54-24, 1W/4m	76,0 dB
Sensitivity EN54-24, 1W/1m	88,0 dB
Dispersion -6dB, 500Hz	h/v 180°
Dispersion -6dB, 1KHz	h/v 155°
Dispersion -6dB, 2KHz	h/v 80°
Dispersion -6dB, 4KHz	h/v 65°

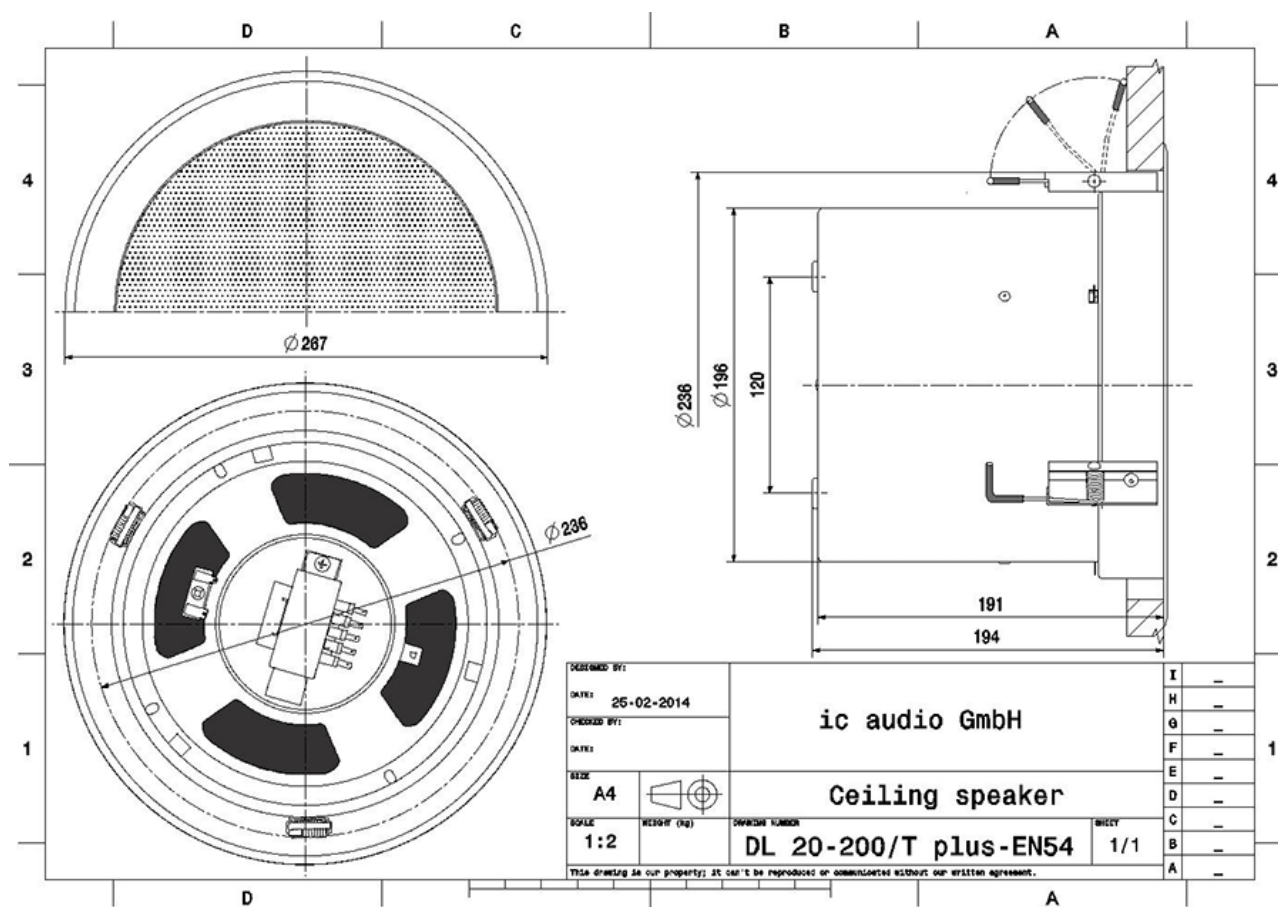
## Technical Data (Mechanical)

Dimensions	268x192 mm
IP Rating	IP21
Weight (net)	3,42 kg
Ceiling Cut-out	243 mm
Temperature range	-10 / +55 C°
Mounting	Quick fit mounting
Connector	2-pin ceramic block
Terminal diameter	3,2 mm
Maximum cable passage	8 mm <sup>2</sup>
Colour	RAL 9010

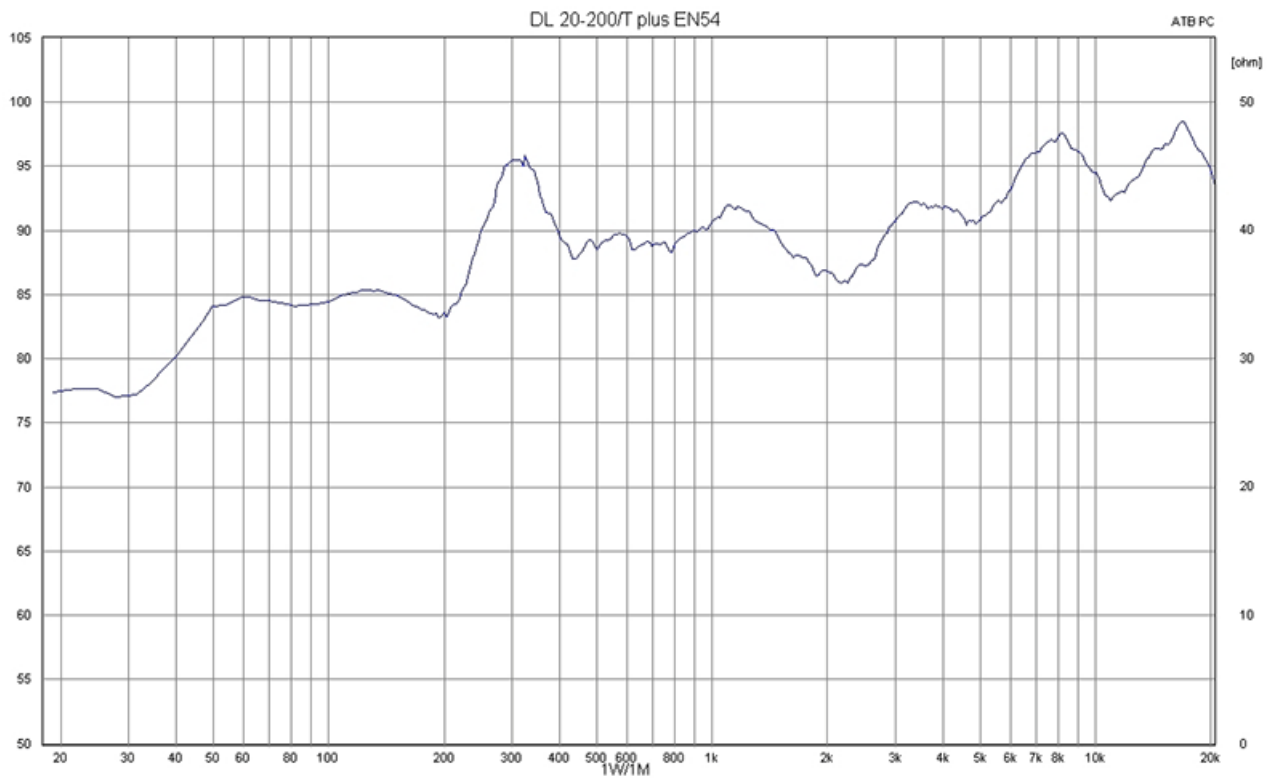
## Product Attributes



## Technical Diagrams

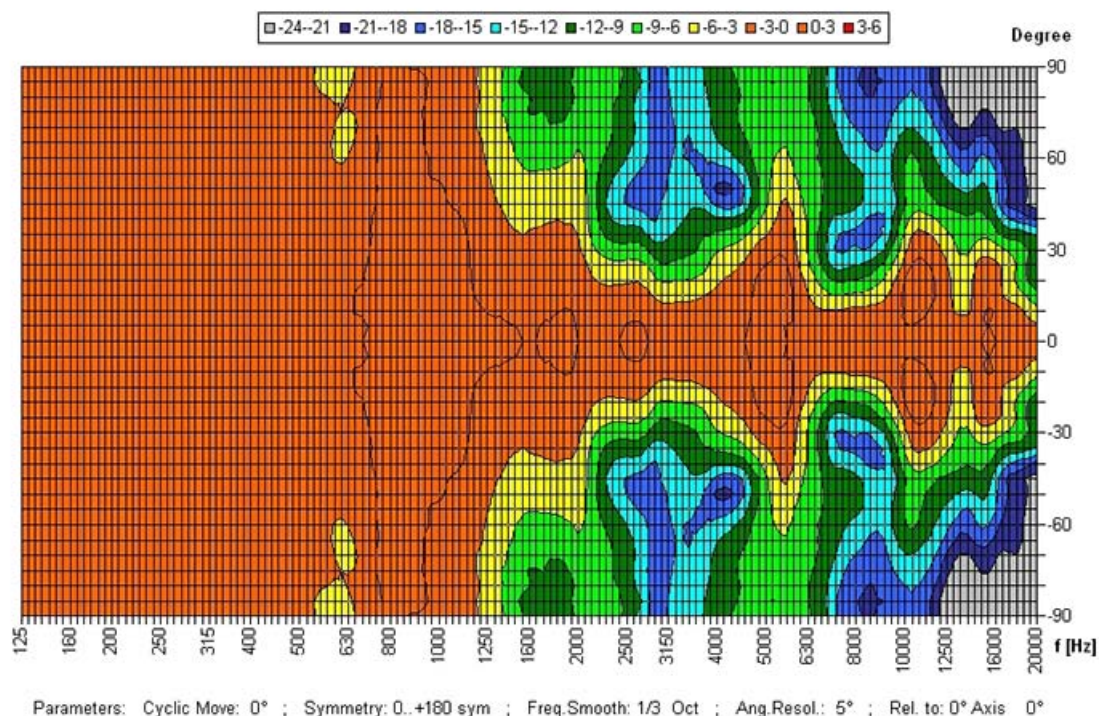


## Frequency Response Diagrams



## Polar Diagrams

Copyright by Four-Audio GmbH & Co KG Licensed to AAC



ic audio loudspeakers are tested and classified according to the IEC standard 60529 (degree of protection by enclosure) against the penetration of foreign objects and moisture. The classification is conforming to standards through characterization with a fixed code. This code consists of the letters IP (International Protection) followed by two digits. The first digit indicates the degree of protection against dust and the second digit the degree of protection against water. Please note that the testing of the products has been carried out in laboratory conditions which are not always 100% comparable with the conditions of different installation environments. This protection can be reduced due to normal wear and tear depending on the installation environment.

RoHS compliant (2011/65/EU)

The IP rating specified is based on ic audio test results, not on CNBOP-PIB test results. Certification only verifies the minimum requirements for EN54-24 compliance.



**Article Nr.:** 20102194

**Packing Unit:** 4

