



## DL-SF 06-100/T-EN54

- quick mounting
- shock-resistant housing
- IP54



EN 54-24:2008  
**Ref. Nr.:** 015-15  
**ID-Code:** SAA-LS17  
1438-CPR-0426

ic audio GmbH, Boehringerstraße 14a,  
D-68307 Mannheim, Germany

CE-Symbol gemäß Richtlinie 93/68EWG

This speaker is the best choice for installations in damp locations, such as bathrooms and can also be used in clean room applications. The 6W powered ceiling speaker has a closed housing and is equipped with a 100mm full-range loudspeaker chassis and a 100V transformer with 3 power adjustments. Also the the low impedance operation with 8 ohm is possible. The high-density, impact-resistant ABS plastic housing in RAL 9016 ensures a balanced sound.

A rugged metal grille provides continuous stability. Quick and easy mounting with spring clamps and short tension distance. The speaker is certified according EN 54-24. For additional reliability, a ceramic block and a thermal fuse is provided in a junction box and the speaker chassis is impregnated against wetness.

This speaker is suitable for a ceiling strength of about 6 – 25 mm. Our specification is primarily related to solid ceilings, for ceilings with soft materials a higher ceiling thicknesses could be necessary. In addition, stronger cables and other fittings may also result in changes of the appropriate setup. With regard to the variety of materials and manufacturers, we recommend to build in a sample of the speaker to match the requirements accurately.

## Technical Data (Electrical)

Description	DL-SF 06-100/T-EN54
Power	6/3/1,5 W (8)
Impedance (100V)	1667/3333/6667 ohm
Frequency Range	187 - 23.700 Hz
Frequency Response	168 - 25.000 Hz
SPL IEC268-5 , 1W/1m	87,0 dB
SPL EN54-24, Pmax/4m	85,0 dB
Sensitivity EN54-24, 1W/4m	75 dB
Sensitivity EN54-24, 1W/1m	86,8 dB
Dispersion -6dB, 500Hz	V 180° H 180°
Dispersion -6dB, 1KHz	V 180° H 180°
Dispersion -6dB, 2KHz	V 180° H 180°
Dispersion -6dB, 4KHz	V 64° H 64°

Please note: Because of many different types of ceiling materials and ceiling strengths we recommend to build in a sample of the speaker to match the requirements accurately.

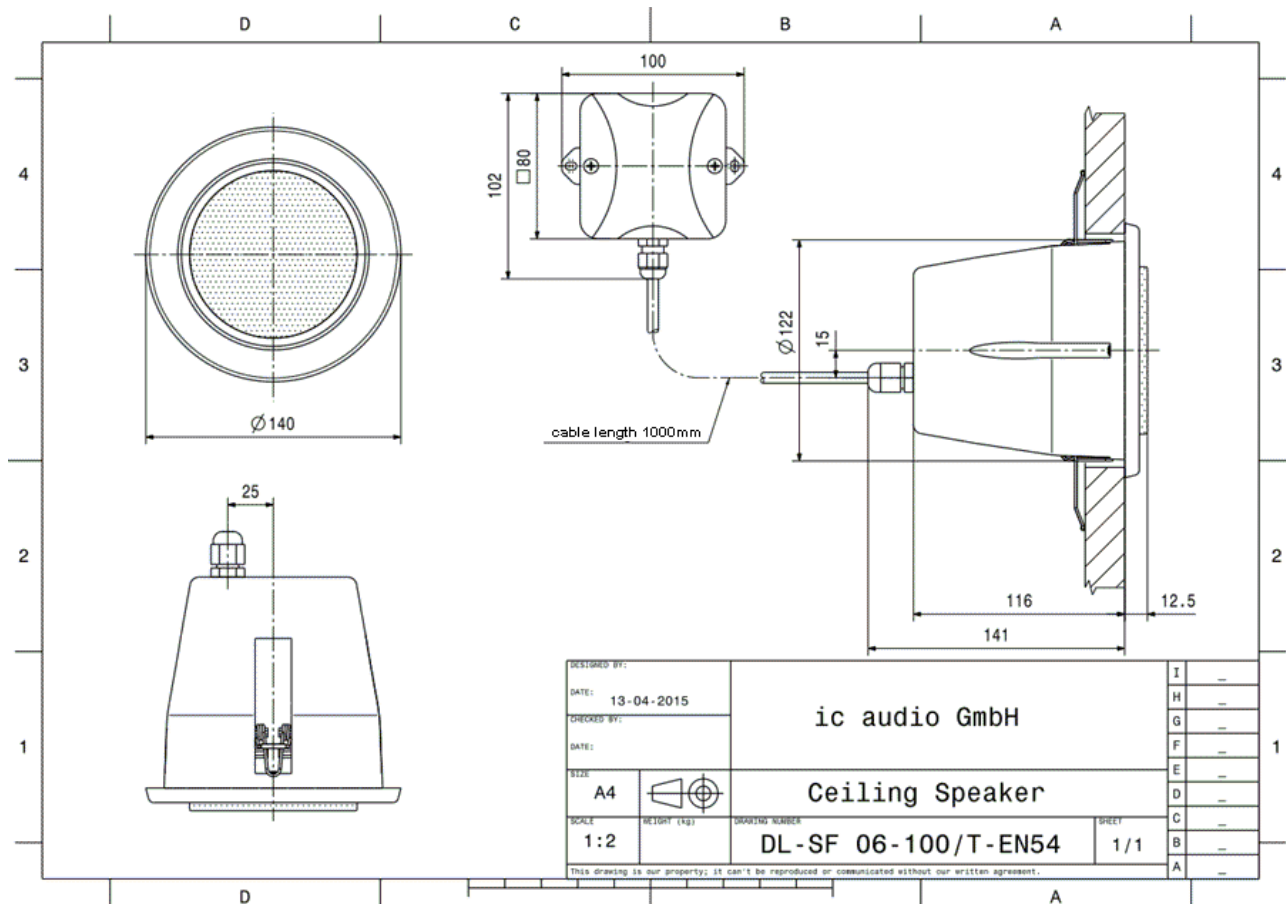
## Technical Data (Mechanical)

Dimensions	140 x 130 mm
IP Rating	IP54
Weight (net)	0,99 kg
Ceiling Cut-out	129 mm
Temperature range	-10 / +55 C°
Mounting	Snap system
Connector	2-pin ceramic block
Colour	RAL 9016

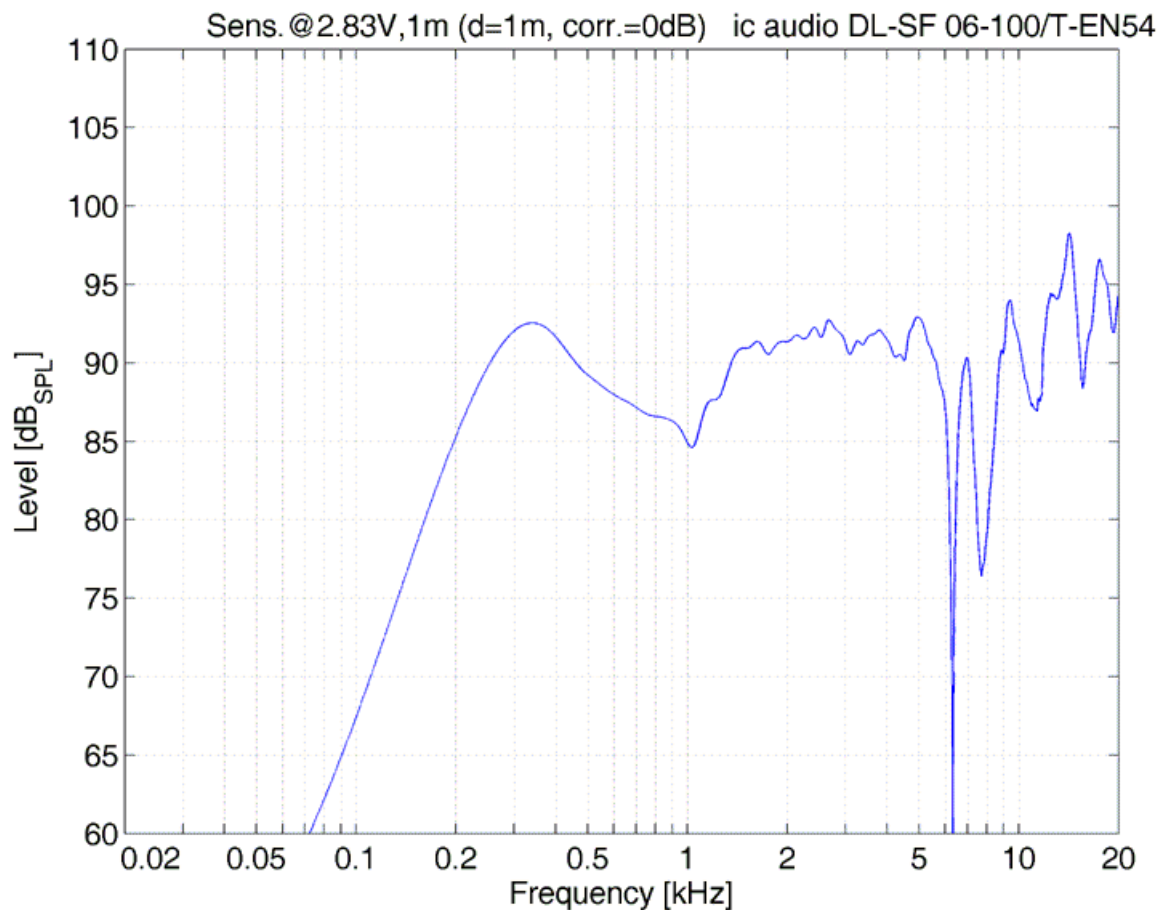
## Product Attributes



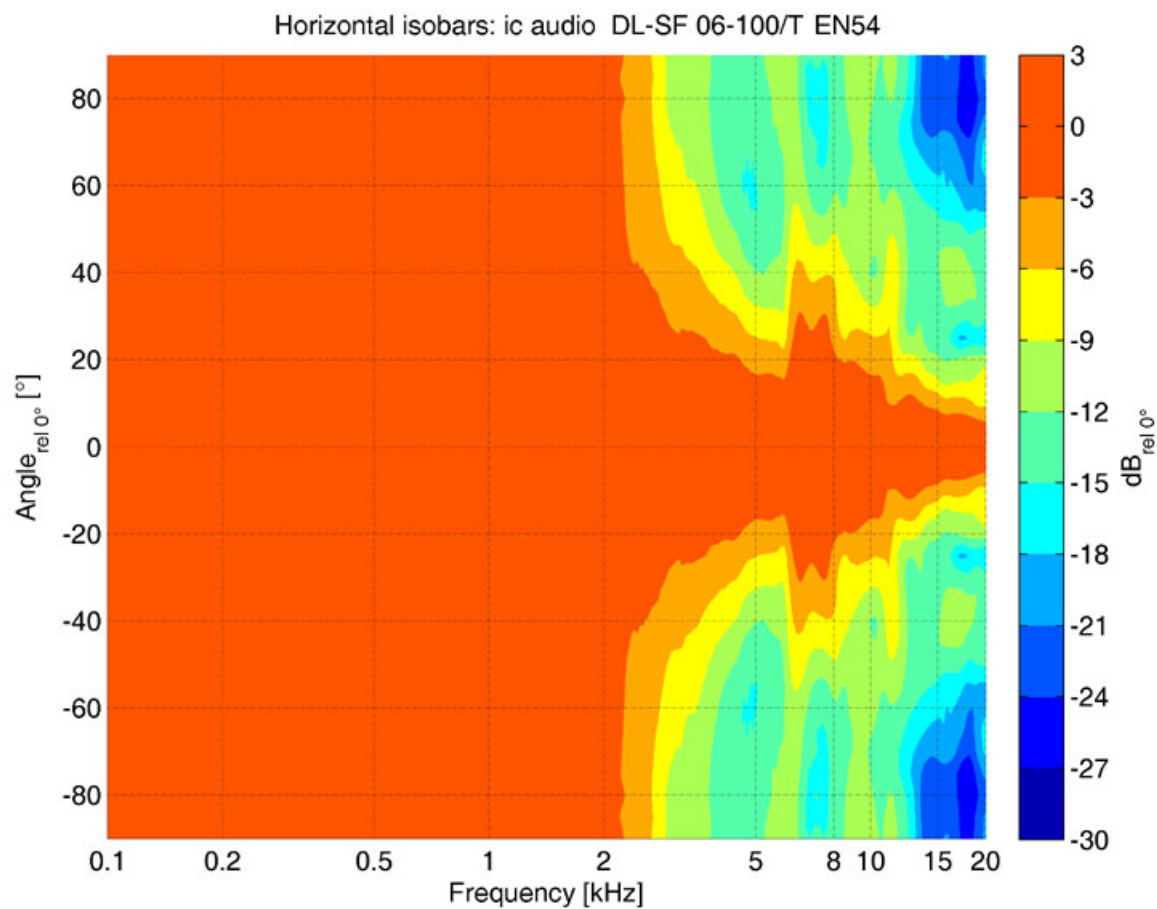
## Technical Diagrams



## Frequency Response Diagrams



## Polar Diagrams



ic audio loudspeakers are tested and classified according to the IEC standard 60529 (degree of protection by enclosure) against the penetration of foreign objects and moisture. The classification is conforming to standards through characterization with a fixed code. This code consists of the letters IP (International Protection) followed by two digits. The first digit indicates the degree of protection against dust and the second digit the degree of protection against water. Please note that the testing of the products has been carried out in laboratory conditions which are not always 100% comparable with the conditions of different installation environments. This protection can be reduced due to normal wear and tear depending on the installation environment.

RoHS compliant (2011/65/EU)

The IP rating specified is based on ic audio test results, not on CNBOP-PIB test results. Certification only verifies the minimum requirements for EN54-24 compliance.



**Article Nr.:** 20142908

**Packing Unit:** 16

